

To arrange a viewing contact us  
today on 01268 777400



## Stacey Drive, Basildon Guide price £1,000,000

VIDEO PRESENTATION IN TAB BELOW TO VIEW THIS OUTSTANDING HOIME IN MORE DETAIL - Aspire Estate Agents Basildon are proud to present this outstanding six-bedroom detached home, perfectly situated in the prestigious and sought-after area of Langdon Hills. Guide Price: £1,000,000 - £1,300,000

Occupying a substantial plot and presented to an impeccable standard throughout, this impressive residence offers a rare blend of style, space, and functionality—making it an ideal choice for growing families or those seeking generous living accommodation.

Tucked away in a peaceful residential setting, the property features striking kerb appeal with a spacious driveway, double garage, and beautifully landscaped frontage. Inside, the home spans two well-planned floors, filled with natural light and offering generously proportioned rooms throughout.

The ground floor boasts a contemporary, fully fitted kitchen with a dedicated breakfast area, alongside a practical utility room. A formal dining room and a bright, expansive lounge—complete with an elegant fireplace and direct access to the rear garden—create the perfect setting for entertaining. A second reception room and a convenient ground floor W.C. add further versatility, ideal for use as a study, playroom, or additional living space.

The rear garden is a true standout—offering a private, serene oasis with mature planting and plenty of room for entertaining. Whether enjoying summer barbecues or quiet evenings outdoors, this space is designed to impress.

Upstairs, a generous landing leads to six well-appointed bedrooms, several of which benefit from en-suite facilities. This thoughtful layout is perfect for larger families or for accommodating guests in comfort and

<p><b>WC</b>  Dimensions: 5'9" x 2'10" (1.77m x 0.88m)  Features: Low level WC, wash hand basin, radiator, tiled floor, smooth ceiling</p>	<p><b>Lounge</b>  Dimensions: 18'6" x 12'4" (5.66m x 3.76m)  Features: Double glazed French doors to rear, smooth coved ceiling, laminate flooring, feature fireplace, radiator</p>
<p><b>Garden</b>  Approximate Size: 20m x 18m  Features: Paved seating area, remainder laid to lawn, flower and shrub borders, side access</p>	<p><b>Utility Room</b>  Dimensions: 8'3" x 5'6" (2.53m x 1.69m)  Features: Roll-edged worktops, stainless steel sink drainer, wash hand basin, space for washing machine and tumble dryer, tiled splashbacks, radiator, smooth coved ceiling</p>
<p><b>First Floor Landing</b>  Dimensions: 10'4" x 16'3" (3.16m x 4.96m)  Features: Double glazed window to front, loft hatch access, smooth coved ceiling, radiator, three built-in storage cupboards</p>	<p><b>Bedrooms</b></p>
<p><b>Bathroom</b>  Dimensions: 8'0" x 8'11" (2.46m x 2.74m)  Features: Obscured double glazed window to rear, low level WC, pedestal wash hand basin, tiled floor, partly tiled walls, smooth coved ceiling, fitted spotlights, free-standing claw foot bath</p>	<p><b>Bedroom 1</b>  Size: 13'4" x 10'11" (4.08m x 3.34m)  Double glazed window to front, radiator, laminate flooring, fitted wardrobe, smooth coved ceiling</p>
<p><b>Shower Room</b>  Dimensions: 4'9" x 8'7" (1.47m x 2.64m)  Features: Low level WC, pedestal wash hand basin, radiator, shower cubicle, smooth coved ceiling, tiled floor, partly tiled walls</p>	<p><b>Bedroom 2</b>  Size: 11'3" x 12'5" (3.44m x 3.79m)  Double glazed window to front, built-in wardrobe, radiator, smooth coved ceiling</p>
<p><b>Parking</b>  Capacity: Off-street parking for 7 vehicles</p>	<p><b>Bedroom 3</b>  Size: 12'5" x 12'7" (3.79m x 3.84m)  Double glazed window to rear, radiator, built-in wardrobe, smooth coved ceiling</p>
<p><b>Hobby Room</b>  Dimensions: 16'8" x 11'2" (5.09m x 3.42m)  Features: Double glazed French doors to rear, additional side door, laminate flooring, smooth coved ceiling</p>	<p><b>Bedroom 4</b>  Size: 8'9" x 9'10" (2.67m x 3.01m)  Double glazed window to rear, radiator, built-in cupboard, smooth coved ceiling</p>
<p><b>Dining Room</b>  Dimensions: 10'10" x 11'3" (3.32m x 3.45m)  Features: Double glazed window to front, radiator, laminate flooring, smooth coved ceiling</p>	<p><b>Bedroom 5</b>  Size: 9'9" x 14'10" (2.98m x 4.54m)  Double glazed window to rear, radiator, built-in cupboard, fitted spotlights, smooth coved ceiling</p>
<p><b>Kitchen</b>  Dimensions: 6.60m–4.2m x 2.38m–4.22m  Features: Double glazed window to rear, Butler sink, roll-edged worktops, wash hand basin, radiator, range oven with overhead extractor, space for fridge/freezer and dishwasher, tiled floor and splashbacks, smooth coved ceiling</p>	<p><b>Bedroom 6</b>  Size: 13'5" x 16'11" (4.11m x 5.16m)  Double glazed window to front, radiator, smooth coved ceiling, loft hatch access, walk-in wardrobe (3.32m x 1.38m)</p>
<p><b>Garden Room</b>  Dimensions: 12'11" x 11'4" (3.94m x 3.47m)  Features: Double glazed window to rear, French doors to garden, smooth coved ceiling</p>	<p><b>Ensuites</b></p>
	<p><b>Ensuite 1</b>  Size: 8'5" x 3'2" (2.58m x 0.98m)  Low level WC, pedestal wash hand basin, shower cubicle, tiled floor, smooth coved ceiling, fitted spotlight</p>
	<p><b>Ensuite 2</b>  Size: 6'2" x 6'1" (1.89m x 1.86m)</p>

Obscured double glazed window to side, low level WC, pedestal wash hand basin, panelled bath, tiled floor, partly tiled walls, radiator, smooth coved ceiling

#### Porch

Dimensions: 6'6" x 5'3" (2.00m x 1.61m)

Double glazed door and window, radiator, tiled floor, smooth coved ceiling

#### Hallway

Dimensions: 14'5" x 8'4" (4.41m x 2.56m)

Stairs to first floor, radiator, laminate flooring, smooth coved ceiling, built-in storage cupboard, under-stairs storage

#### Downstairs WC

Dimensions: 8'5" x 3'10" (2.58m x 1.17m)

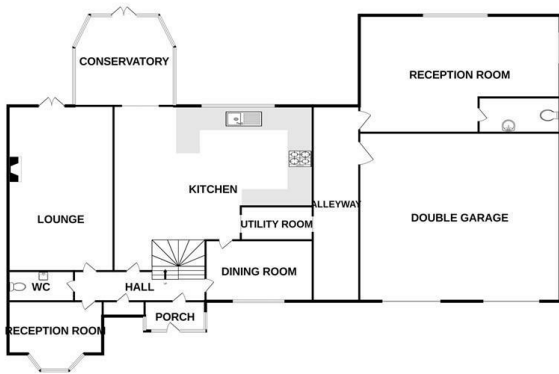
Obscured double glazed window to side, tiled floor, low level WC, pedestal wash hand basin, radiator, smooth coved ceiling

#### Study Room

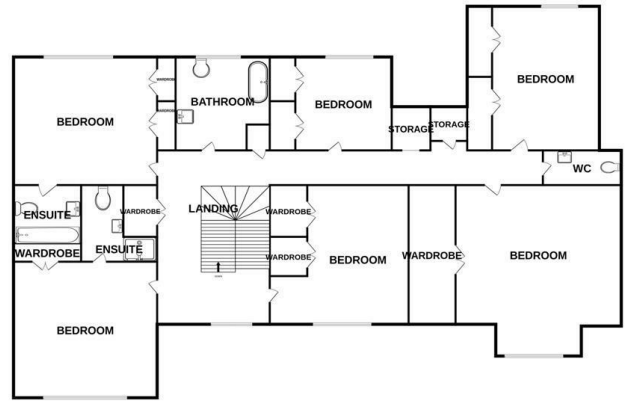
Dimensions: 12'4" x 11'5" (3.76m x 3.49m)

Double glazed bay window to front, laminate flooring, radiator, smooth coved ceiling

GROUND FLOOR



1ST FLOOR



Whilst every attempt has been made to ensure the accuracy of the floorplan contained here, measurements of doors, windows, rooms and any other items are approximate and no responsibility is taken for any error, omission or mis-statement. This plan is for illustrative purposes only and should be used as such by any prospective purchaser. The services, systems and appliances shown have not been tested and no guarantee as to their operability or efficiency can be given.  
Made with Metropix ©2025

Energy Efficiency Rating		
	Current	Potential
Very energy efficient - lower running costs		
(92 plus) <b>A</b>		
(81-91) <b>B</b>		
(69-80) <b>C</b>		
(55-68) <b>D</b>		
(39-54) <b>E</b>		
(21-38) <b>F</b>		
(1-20) <b>G</b>		
Not energy efficient - higher running costs		
<b>England &amp; Wales</b>	EU Directive 2002/91/EC	
Environmental Impact (CO <sub>2</sub> ) Rating		
	Current	Potential
Very environmentally friendly - lower CO <sub>2</sub> emissions		
(92 plus) <b>A</b>		
(81-91) <b>B</b>		
(69-80) <b>C</b>		
(55-68) <b>D</b>		
(39-54) <b>E</b>		
(21-38) <b>F</b>		
(1-20) <b>G</b>		
Not environmentally friendly - higher CO <sub>2</sub> emissions		
<b>England &amp; Wales</b>	EU Directive 2002/91/EC	



Under the Property Misdescriptions Act 1991 we make every effort to ensure our sales details are accurate but they are a general outline and do not constitute any part of an offer or contract. Any services, equipment and fittings have not been tested and no warranty can be given as to their condition. We strongly recommend that all the information provided be verified by your advisors and in particular, measurements required for a specific purpose such as fitted furniture or carpets. Please tell us if you have any problems and members of our branches will help either over the phone or in person. A copy of our complaints procedure is available on request. The details are issued on the strict understanding that any negotiations in respect of the property named herein are conducted through Aspire Estate Agents.